

## ATTO 647N (STED/GSD) Goat anti-Rabbit IgG

**Catalog No:** 15048, 15068

**Format:** 250 µl, 35 µl

### Chemical Properties:

**Contents:** 250 µl (Catalog No. 15048) or 35 µl (Catalog No. 15068) of affinity purified goat anti-rabbit IgG (H+L) conjugated to ATTO 647N (STED/GSD) in PBS, pH 7.4, 0.01% sodium azide.

**Specificity:** This antibody was purified by immunoaffinity chromatography and cross-adsorbed. It reacts with whole molecule rabbit IgG and shows minimum cross-reactivity with bovine, chicken, goat, guinea pig, horse, human, mouse, rat and sheep serum proteins. No cross-reactivity was observed with non-immunoglobulin serum proteins.

**Fluorescent Properties:** ATTO 647N (STED/GSD) belongs to a new generation of fluorescent labels for the red spectral region. Characteristic features of the label are strong absorption, excellent fluorescence quantum yield, high photo stability, excellent ozone resistance, good solubility, and very little triplet formation.

**Molar extinction Coefficient:** 150,000 M<sup>-1</sup>cm<sup>-1</sup> (measured at A<sub>max</sub>)

**Quantum Yield:** 65%

**Excitation Max:** 644 nm

**Emission Max:** 669 nm

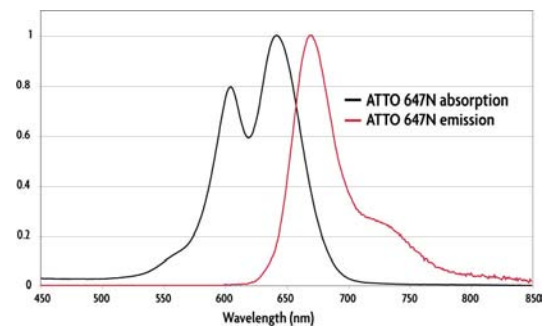
### Application:

Immunofluorescence: 1:1000 to 1:2000

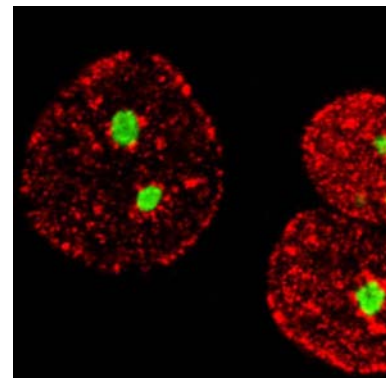
**Quality Control:** This antibody has been quality control-tested by spectrophotometrical evaluation and by immunocytochemistry.

**Storage and Guarantee:** Some products may be shipped at room temperature. This will not affect their stability or performance. Upon receipt, unconjugated antibodies may be stored at -20°C for up to 2 years. Fluorophore- & enzyme-conjugated antibodies should be stored at 4°C. Fluorophore-conjugated antibodies should be protected from light. Keep reagents on ice when not in storage; to avoid repeated freeze/thaw cycles, we recommend aliquoting items that will be stored frozen into single-use fractions prior to freezing. This product is guaranteed for 6 months from date of receipt.

This product is for research use only and is not for use in diagnostic procedures.

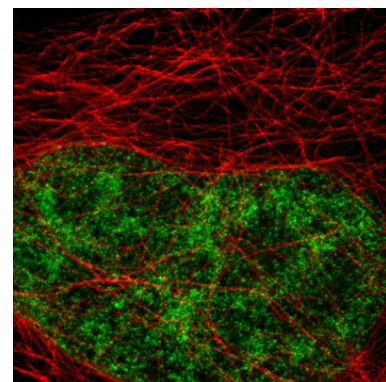


**Absorption and emission spectra of ATTO 647N (STED/GSD) Dye.**



### Immunofluorescence staining using the ATTO 647N (STED/GSD) Goat anti-rabbit IgG secondary antibody.

HeLa cells stained with Histone H3 trimethyl Lys27 rabbit polyclonal antibody (Cat. No. 39155) at 1:500 dilution and ATTO 647N



### Active Motif's primary antibodies and fluorescent secondary antibodies in STED microscopy.

HeLa cells were stained with alpha Tubulin mouse monoclonal antibody (Clone 5-B-1-2, Cat. No. 39527) and Chromeo 494 Goat anti-