

Recombinant CHD1 protein

Catalog No: 81307, 81607

Expressed In: Baculovirus

Quantity: 20, 1000 µg

Concentration: 0.4 µg/µl

Source: Human

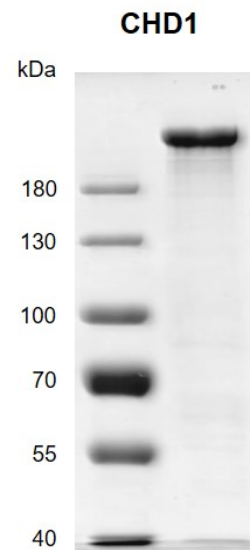
Buffer Contents: Recombinant CHD1 protein is supplied in 25 mM HEPES-NaOH pH 7.5, 300 mM NaCl, 10% glycerol, 0.04% Triton X-100, and 0.5 mM TCEP.

Background: CHD1 (Chromodomain Helicase DNA Binding Protein 1) is one of the CHD family proteins. They are characterized by the presence of chromo (chromatin organization modifier) domains and SNF2-related helicase/ATPase domains. CHD1 is a ATP-dependent chromatin-remodeling factor which functions as substrate recognition component of the transcription regulatory histone acetylation (HAT) complex SAGA. It can regulate polymerase II transcription, and is also required for efficient transcription by RNA polymerase I, and more specifically the polymerase I transcription termination step. CHD1 is not only involved in transcription-related chromatin-remodeling, but also required to maintain a specific chromatin configuration across the genome. It is required for the bridging of SNF2, the FACT complex, the PAF complex as well as the U2 snRNP complex to H3K4me3.

Protein Details: Full length CHD1 protein (accession number AAI17135.1) was expressed in a baculovirus system with an N-terminal FLAG-Tag. The molecular weight of the protein is 197.9 kDa.

Application Notes: This product was manufactured as described in Protein Details. Where possible, Active Motif has developed functional or activity assays for recombinant proteins. Additional characterization such as enzyme kinetic activity assays, inhibitor screening or other biological activity assays may not have been performed for every product. All available data for a given product is shown on the lot-specific Technical Data Sheet.

Storage and Guarantee: Recombinant proteins in solution are temperature sensitive and must be stored at -80°C to prevent degradation. Avoid repeated freeze/thaw cycles and keep on ice when not in storage. This product is guaranteed for 6 months from date of arrival.



Recombinant CHD1 protein gel

7.5% SDS-PAGE gel with
Coomassie blue staining

MW: 197.9 kDa

Purity: >90%