

## AbFlex® Pan-Ras antibody (rAb)

**Catalog Nos:** 91421, 91422

**Application(s):** IP, WB

**Reactivity:** Human

**Quantities:** 100 µg, 10 µg

**Purification:** Protein A Chromatography

**Host:** Rabbit

**Isotype:** IgG2a

**Concentration:** 1 µg/µl

**Molecular Weight:** 24 kDa

**Background:** AbFlex® antibodies are recombinant antibodies (rAbs) that have been generated using defined DNA sequences to produce highly specific, reproducible antibodies. Each AbFlex antibody contains a 6xHis Tag, a Biotinylation Tag for enzymatic biotin conjugation using the biotin ligase, BirA, and a sortase recognition motif (LPXTG) to attach a variety of labels directly to the antibody including fluorophores, enzymatic substrates (HRP, AP), peptides, drugs as well as solid supports. AbFlex® Pan-Ras antibody was expressed as full-length IgG with mouse immunoglobulin heavy and light chains (IgG2a isotype) in mammalian 293 cells.

This **Pan-Ras** specific antibody detects all Rat sarcoma (RAS) isomers. This family of genes is involved in cell signaling pathways that control cell growth and death. The human Ras gene family consists of three identified members H-, K- and N-ras encoding proteins of 188-189 amino acids and 21,000 (p21) daltons. Human H- and K-ras are the homologues of v-H- and v-K-ras, sequences. Oncogenic mutations in Ras genes have been found in about 30% of human cancers. Due to this intracellular relationship **Pan-Ras** antibodies have emerged as a valuable tool for cancer target validation studies.

**Immunogen:** A peptide region of homology between Ras isoforms. This information is proprietary to Active Motif and/or its suppliers.

**Buffer:** Purified IgG2a in 140 mM Hepes, pH 7.5, 70 mM NaCl, 32 mM NaOAc, 0.035% sodium azide, 30% glycerol.

### Application Notes:

Applications Validated by Active Motif:

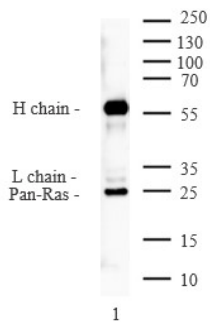
IP: 1 µg/ml per IP

WB: 0.5 - 2 µg/ml

Note: many chromatin-bound proteins are not soluble in a low salt, therefore, we recommend adding 500 mM NaCl to the IP wash buffer for best performance.

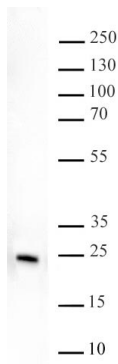
**Storage and Guarantee:** Some products may be shipped at room temperature. This will not affect their stability or performance. Avoid repeated freeze/thaw cycles by aliquoting items into single-use fractions for storage at -20°C for up to 2 years. Keep all reagents on ice when not in storage. This product is guaranteed for 12 months from date of receipt.

This product is for research use only and is not for use in diagnostic procedures.



**AbFlex® Pan-Ras antibody (rAb) tested by Immunoprecipitation.**

1 µg of Pan-Ras antibody was used to immunoprecipitated Pan-Ras from 500 µg of HeLa whole cell extract. The immunoprecipitated protein was detected by Western blotting using the DMAP1 antibody at a dilution of 1 µg/mL.



**AbFlex® Pan-Ras antibody (rAb) tested by Western blot.**

MCF7 whole cell extract (20 µg) was probed with Pan-Ras antibody at 0.5 µg/ml.