

AbFlex® K-Ras antibody (rAb)

Catalog Nos: 91423, 91424

Application(s): ELISA, WB

Reactivity: Human

Quantities: 100 µg, 10 µg

Purification: Protein A Chromatography

Host: Rabbit

Isotype: IgG2a

Concentration: 1 µg/µl

Molecular Weight: 24 kDa

Background: AbFlex® antibodies are recombinant antibodies (rAbs) that have been generated using defined DNA sequences to produce highly specific, reproducible antibodies. Each AbFlex antibody contains a 6xHis Tag, a Biotinylation Tag for enzymatic biotin conjugation using the biotin ligase, BirA, and a sortase recognition motif (LPXTG) to attach a variety of labels directly to the antibody including fluorophores, enzymatic substrates (HRP, AP), peptides, drugs as well as solid supports.

AbFlex® K-Ras antibody was expressed as full-length IgG with mouse immunoglobulin heavy and light chains (IgG2a isotype) in mammalian 293 cells.

Oncogenic mutations in Ras genes have been found in about 30% of human cancers. This family of genes is involved in cell signaling pathways that control cell growth and death. The human Ras gene family consists of three identified members H-, K- and N-ras encoding proteins of 188-189 amino acids and 21,000 (p21) daltons. Human H- and K-ras are the homologues of v-H- and v-K-ras, sequences. Under normal circumstances the Ras-GTPase activity gradually converts GTP to GDP, but in oncogenic mutations Ras locks the protein into the active GTP conformation. This leads to a constant Ras gene and uncontrollable cell growth. Due to this intracellular relationship Ras antibodies have emerged as a valuable tool for target validation studies for cancer.

Immunogen: This information is proprietary to Active Motif and/or its suppliers.

Buffer: Purified IgG in 140 mM Hepes, pH 7.5, 70 mM NaCl, 32 mM NaOAc, 0.035% sodium azide, 30% glycerol. Sodium azide is highly toxic.

Application Notes:

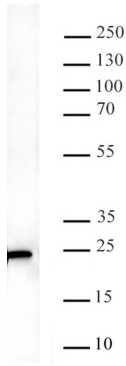
Applications Validated by Active Motif:

0.5 - 2 µg/ml

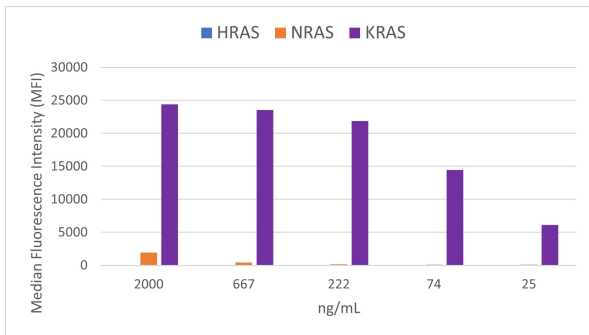
ELISA: Individual optimization may be required.

Storage and Guarantee: Some products may be shipped at room temperature. This will not affect their stability or performance. Avoid repeated freeze/thaw cycles by aliquoting items into single-use fractions for storage at -20°C for up to 2 years. Keep all reagents on ice when not in storage. This product is guaranteed for 12 months from date of receipt.

This product is for research use only and is not for use in diagnostic procedures.



AbFlex® K-Ras Antibody (rAb) tested by Western blot.
 NTERA whole cell extract (20 µg) was probed with AbFlex® K-Ras antibody at 0.5 mg/ml.



AbFlex® K-Ras Antibody tested by bead-based assay multiplex ELISA
 Luminex bead-based specificity analysis was used to confirm the specificity of K-Ras antibody for recombinant human RAS protein isoforms conjugated to MagPlex Luminex beads. Peptide-bound antibody was detected with anti-mouse IgG-Phycoerythrin and read in a Luminex instrument. (Luminex® is a registered trademark of Luminex Corporation.)